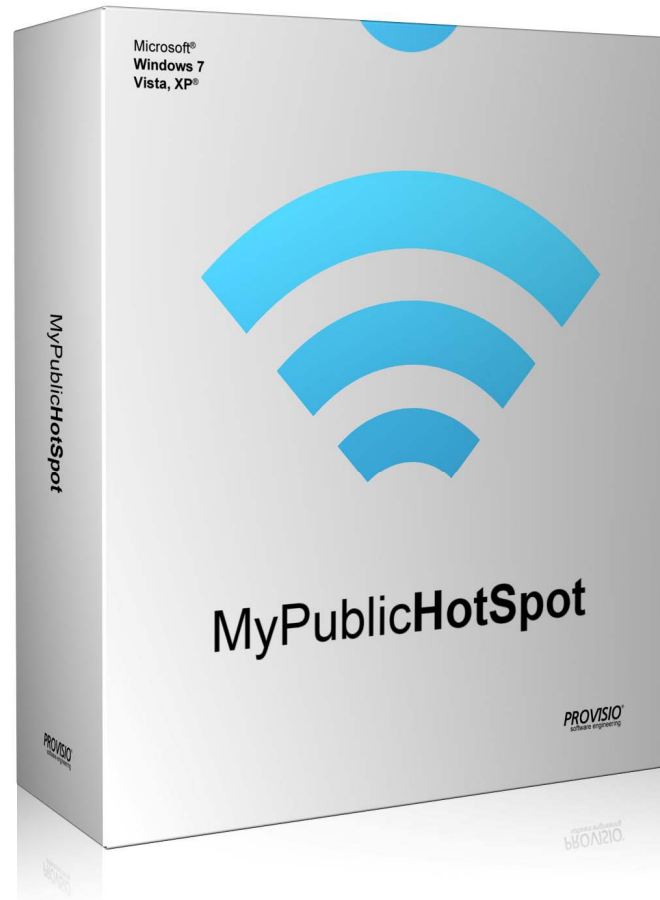




# MyPublicHotSpot



You can use the "MyPublicHotSpot" software application to allow your customers to use your WiFi access point against payment OR without charge and in a safe manner. This lets customers bring in their own laptops and go online using your WLAN access.

Connecting to the Internet via WLAN works in the same way with which you and your customers are already familiar.

You switch your notebook on and search for available and unencrypted WiFi networks. Users will then connect to your WiFi access point and open their web browsers.

However, irrespective of the URL they entered, users will be shown a special welcome page and prompted to authenticate themselves. Users will not be able to use the Internet without providing a prepaid PIN code or some other kind of authentication (except your free web pages).

The application uses the so-called Internet Connection Sharing included in Windows. In addition, SiteCafe Server uses its own driver which makes it possible to control access to the Web.

For more information on Internet Connection Sharing, please refer to the following Microsoft Web site: <http://support.microsoft.com/kb/234815>

### **GUI-Languages**

The interface of MyPublicHotSpot is available in the following languages: English, German, French, Spanish and Russian.

The following is required for running MyPublicHotSpot:

**Recommended model system for the use of MyPublicHotSpot :**

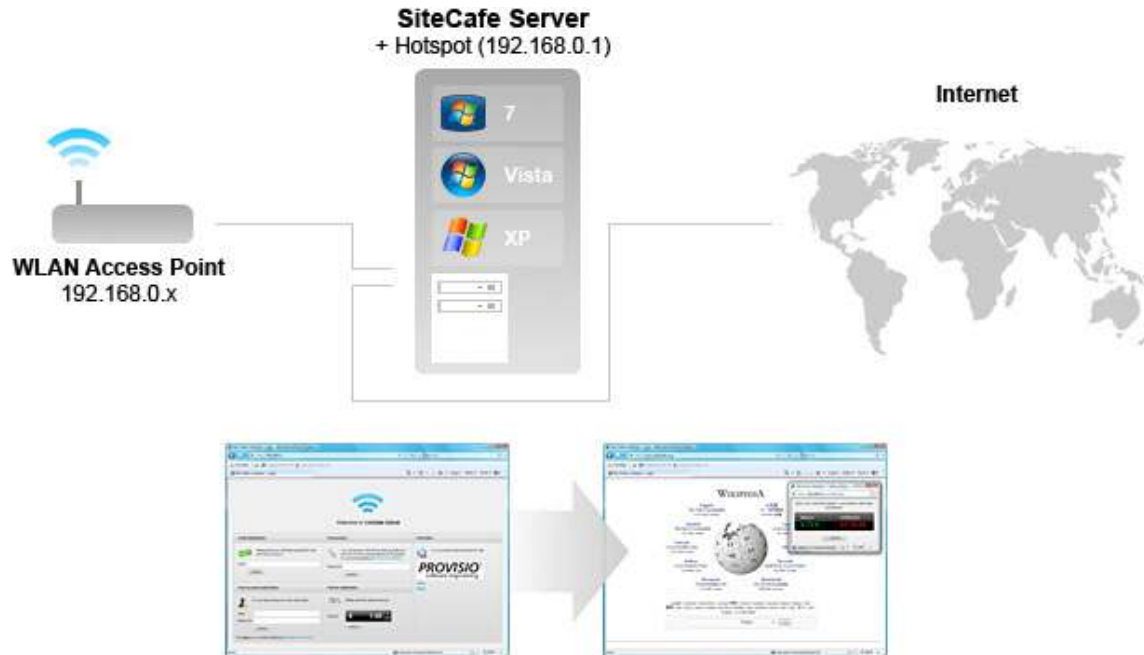
- Modern computer with at least 512 MB of RAM
- Screen resolution of 1,024x786 or more at a color depth of 32 bits or more
- Operating system Windows XP 32-bit (at least SP2), Windows Vista 32-Bit or Windows7 (except the Starter Edition)
- 2 network cards (no USB adapters)
- RAID system (for data security)
- WiFi access point

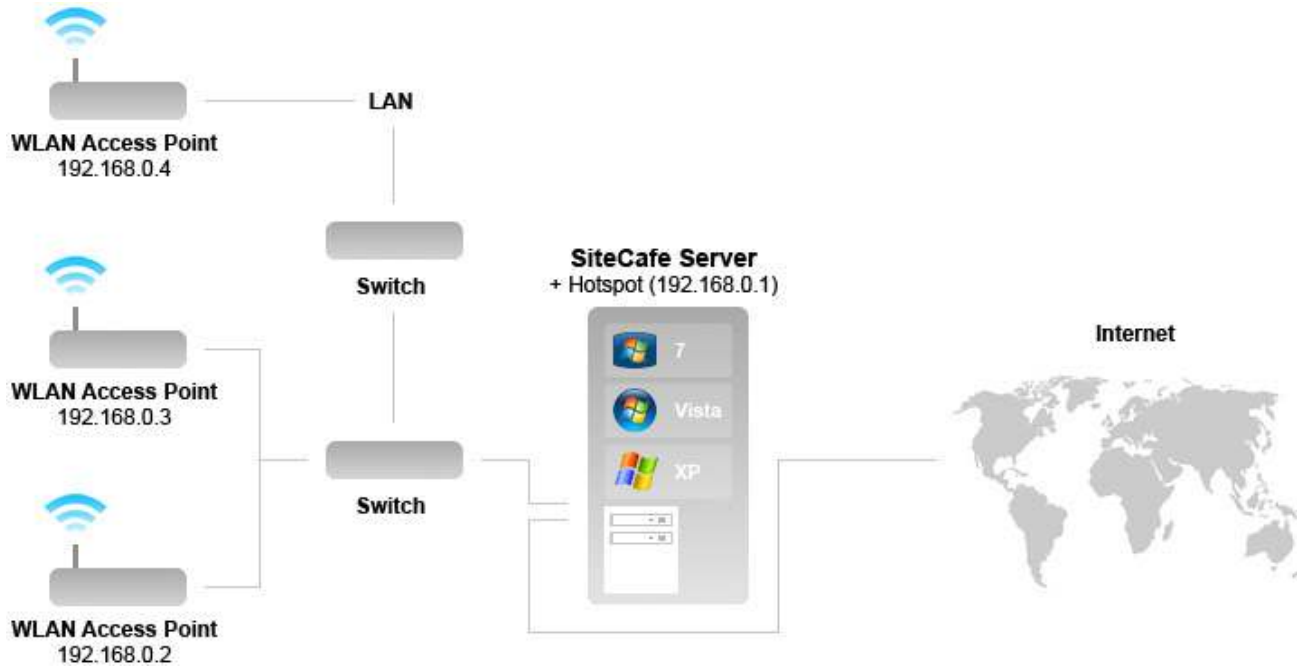
For more information about the system requirements, please log on to:

<http://www.provisio.com/SiteCafe/SystemRequirements.aspx>

The server application "SiteCafe" is installed alongside the HotSpot module. SiteCafe is used for managing customer accounts and is also capable of managing SiteKiosk clients.

You can also install the Ticket Station module which lets your customers purchase prepaid PIN codes in exchange for cash they insert into a vending machine.





## How it works

Thanks to Internet Connection Sharing, the second network card (HotSpot network) is automatically assigned the IP address 192.168.0.1. This IP address is static and unalterable.

## IP addresses of HotSpot networks

This is why all other devices using the HotSpot network must always be in the address range of 192.168.0.x (e.g. the WiFi router/WLAN access point should use 192.168.0.2).

## Exception on Windows7:

Here 192.168.137.0/24 is used and the WiFi router can keep 192.168.0.1.

The IP assigned to the first network card which is connected to the Internet must have a different address range. The specific address range does not matter as long as it is not 192.168.0.x.

## Multiple WiFi access points

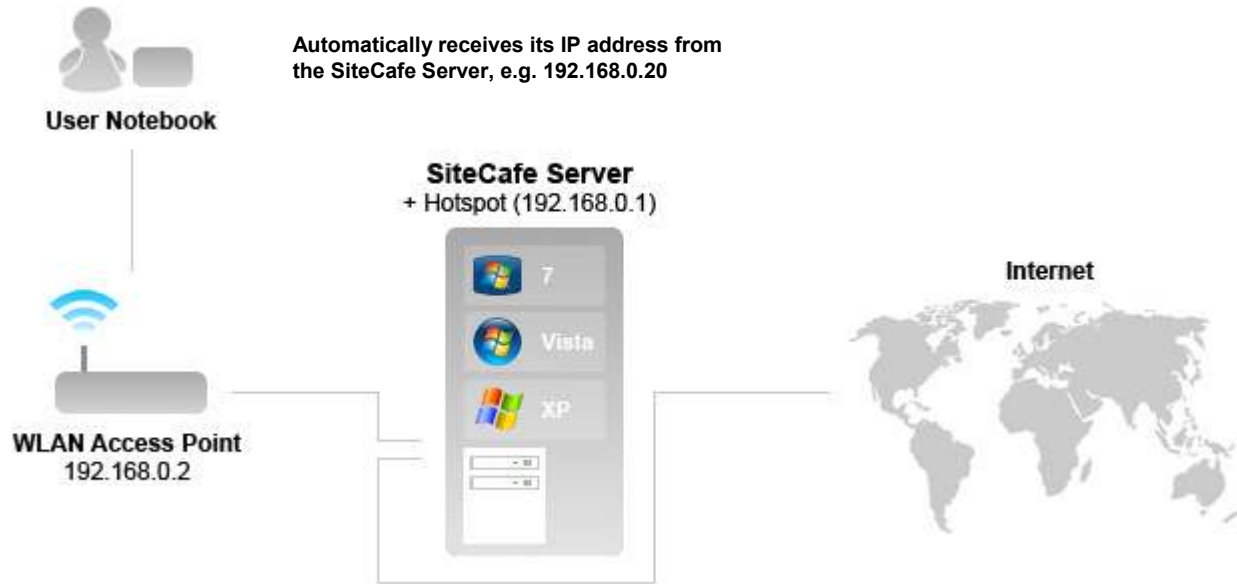
In general, you can operate your HotSpot network with more than one wired or wireless LAN access points. What is important in this regard is that no additional DHCP server is enabled as part of the HotSpot network as the required IP addresses must be assigned by SiteCafe Server.

Therefore, make sure to disable DHCP on all devices within the HotSpot network (insofar as they provide a DHCP server).

## Simplest case of use

MyPublicHotSpot has been installed on a Windows PC which has 2 network cards installed.

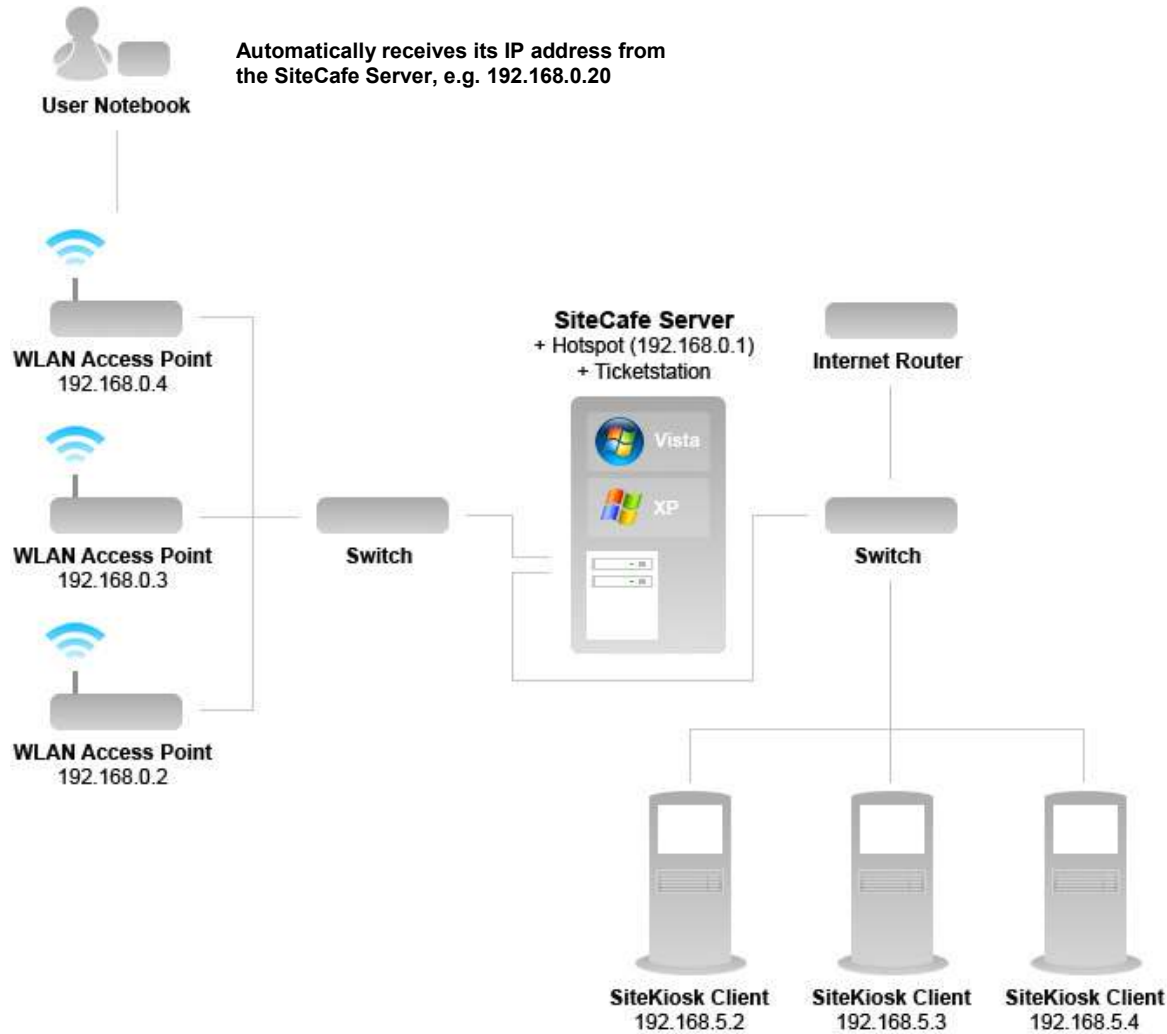
One network card is connected to the Internet. The second network card is connected to the WiFi access point.



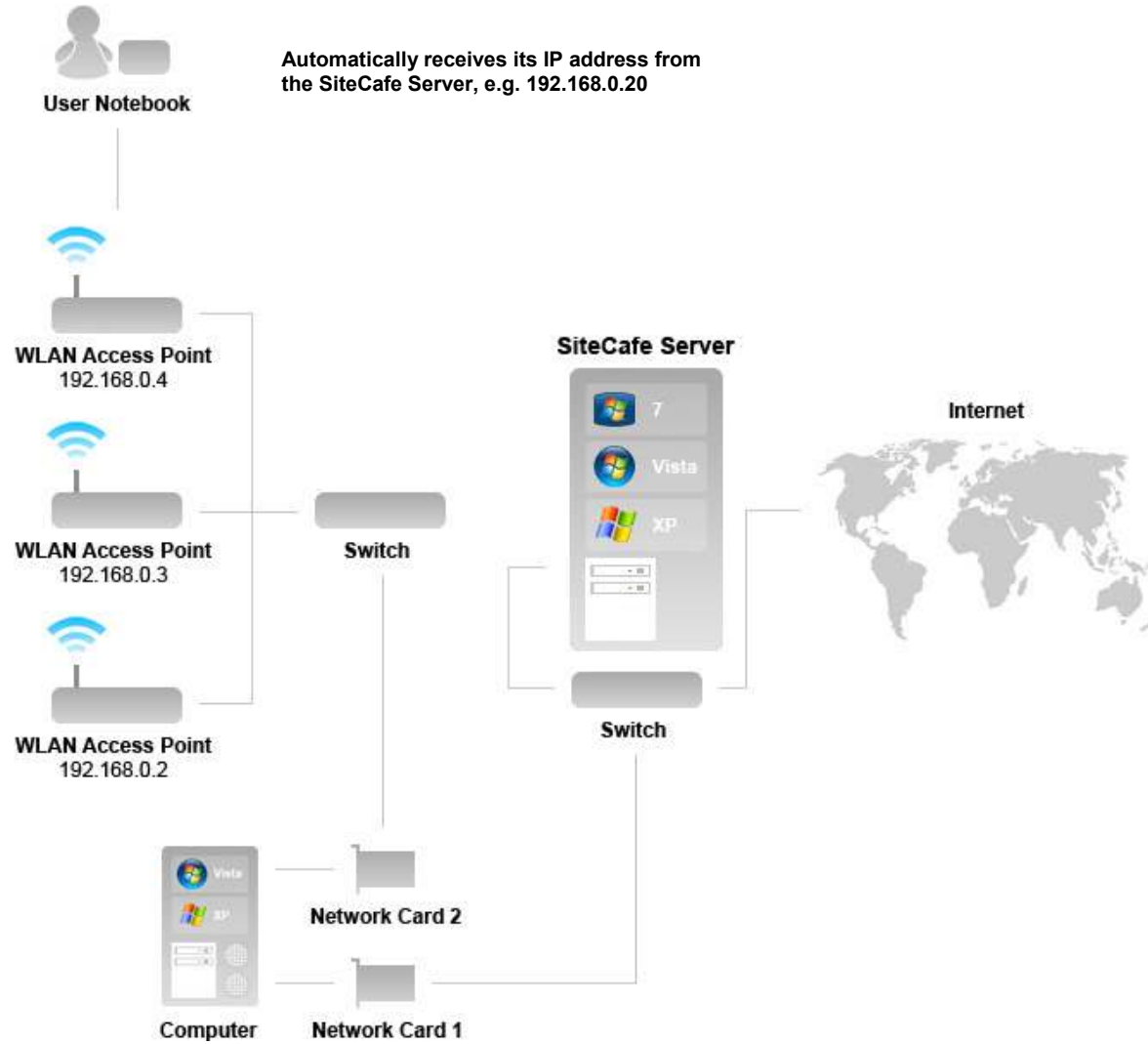
General view when the following components are fully installed and in use:

- SiteCafe Server
- MyPublicHotSpot
- Ticket Station
- SiteKiosk clients

In this view, several WiFi access points have been linked with a switch.



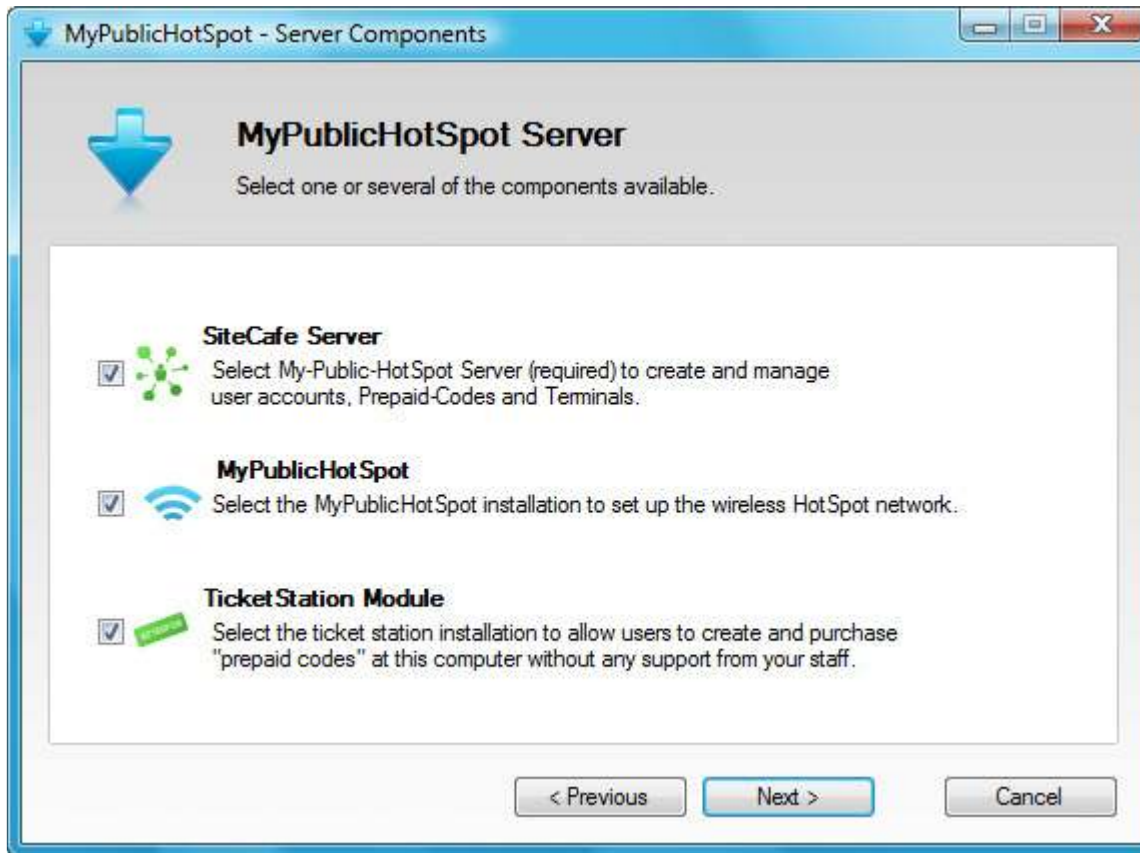
However, you can also install SiteCafe Server and MyPublicHotSpot on two different computers provided they are connected over the network (not recommended).



## Step-by-step installation instructions

Start by installing the SiteCafe Server software (already included in the installation package) together with the MyPublicHotSpot on the machine of your choice.

The Ticket Station module is optional and should not be installed unless you plan on selling prepaid PIN codes using vending machines.



## Step-by-step installation instructions

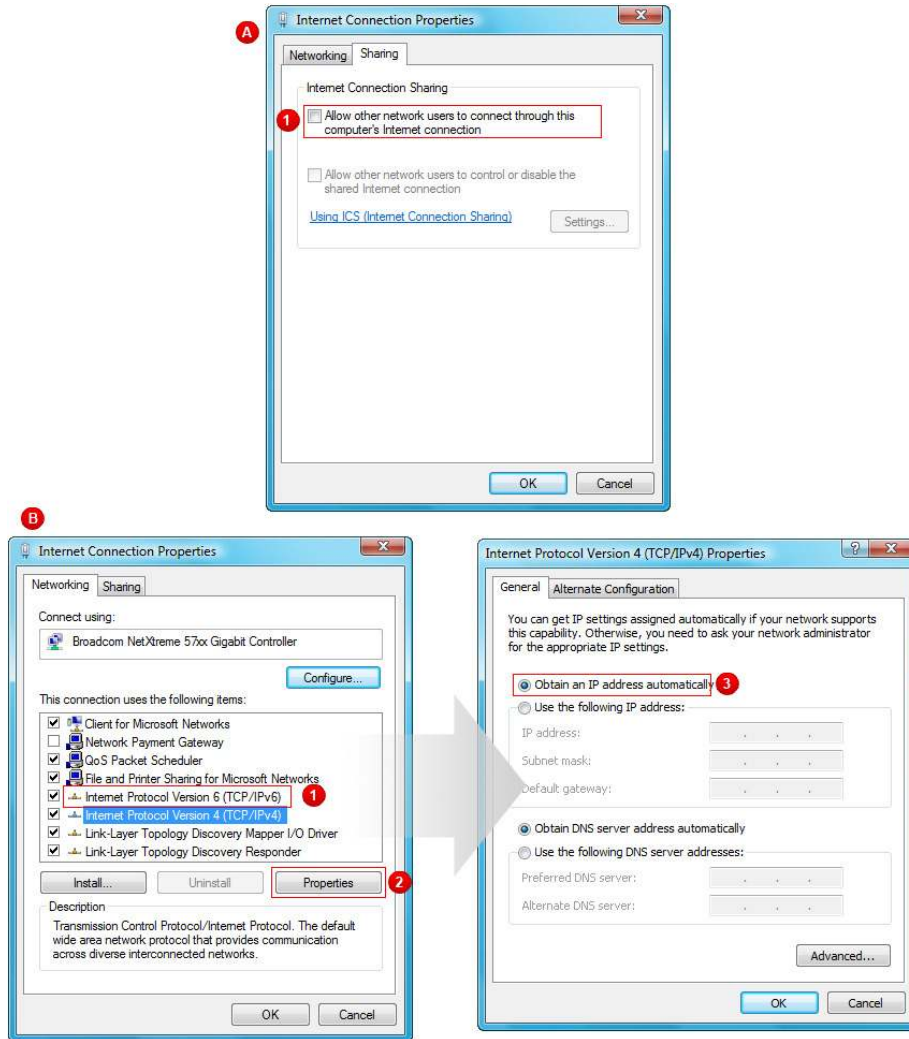
### NOTICE A

Internet Connection Sharing must not be enabled prior to installing the SiteCafe HotSpot module as the automatic configuration will otherwise fail to complete.

You will find the corresponding setting options under network properties of your network card. (see screenshot)

### NOTICE B

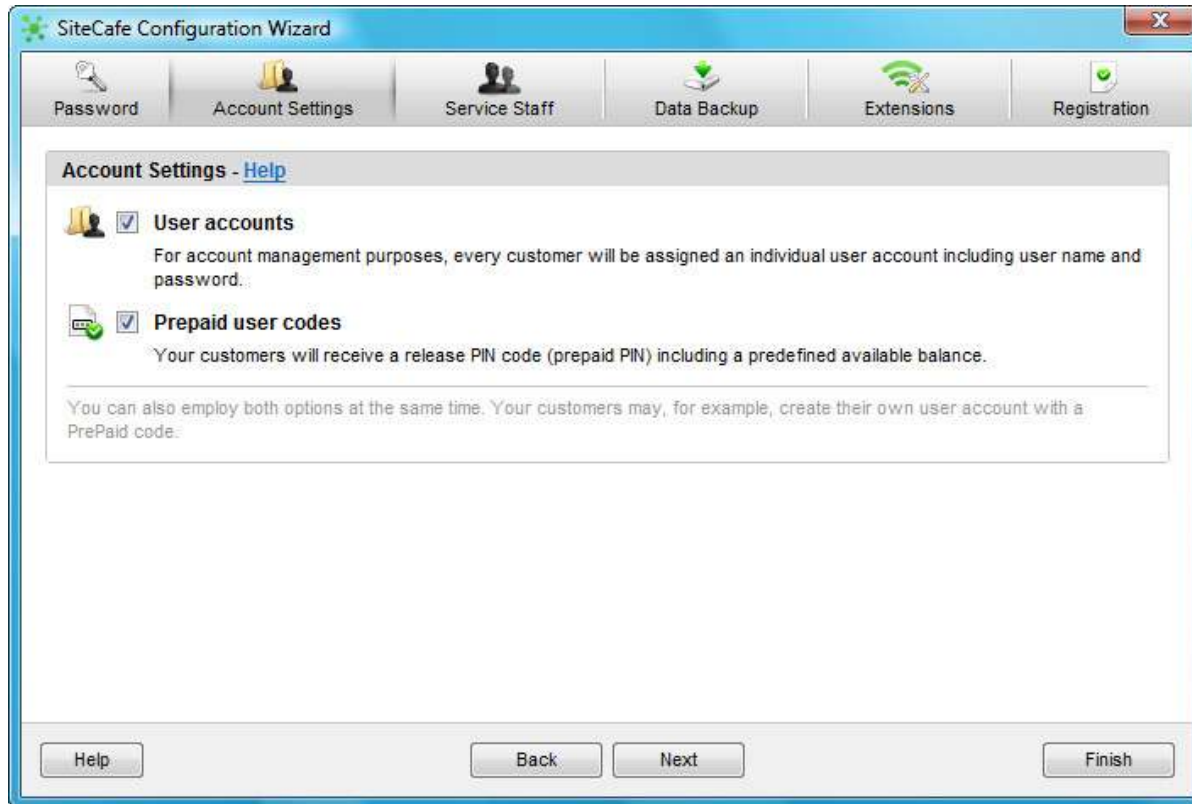
Please make sure not to assign a fixed IP address to the network card responsible for the communication with the HotSpot network. The card must be set to receive its IP address automatically. The required IP will be assigned to the card during the installation process.



## Step-by-step installation instructions

### Configuring SiteCafe Manager

After installing the components, you can use the SiteCafe configuration tool to adjust the basic settings applied in SiteCafe (e.g. the hourly rate).



## Step-by-step installation instructions

### Pricing

Use the configuration tool to specify the currency symbol and the hourly rate.

You can also allow users to pay using PayPal. If you want to use this feature, both you and your customer will need a PayPal account.

### Basic HotSpot configuration

When the basic HotSpot configuration is complete, Internet Connection Sharing will be enabled on the Internet network card, while the "Network Payment Gateway" protocol will be enabled on the HotSpot network card.

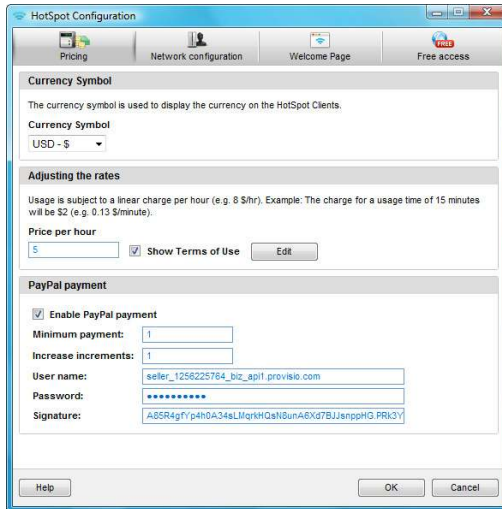
### HotSpot login page

The HotSpot configuration lets you make additional adjustments to the HotSpot login page.

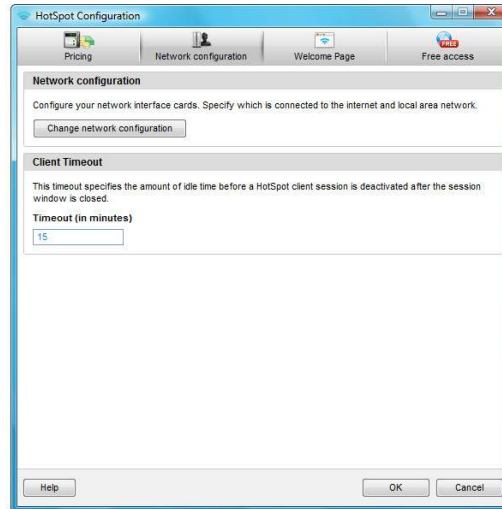
### Free links

You can specify Web sites which will be available for free even before the user has authenticated herself.

Another option is to set up free access for your guests. Users will then have to authenticate and, at the same time, accept your terms of use.



Currency Symbols, Rates, PayPal Payment



Timeout, Network Configuration



Language, Welcome Text, Company Logo

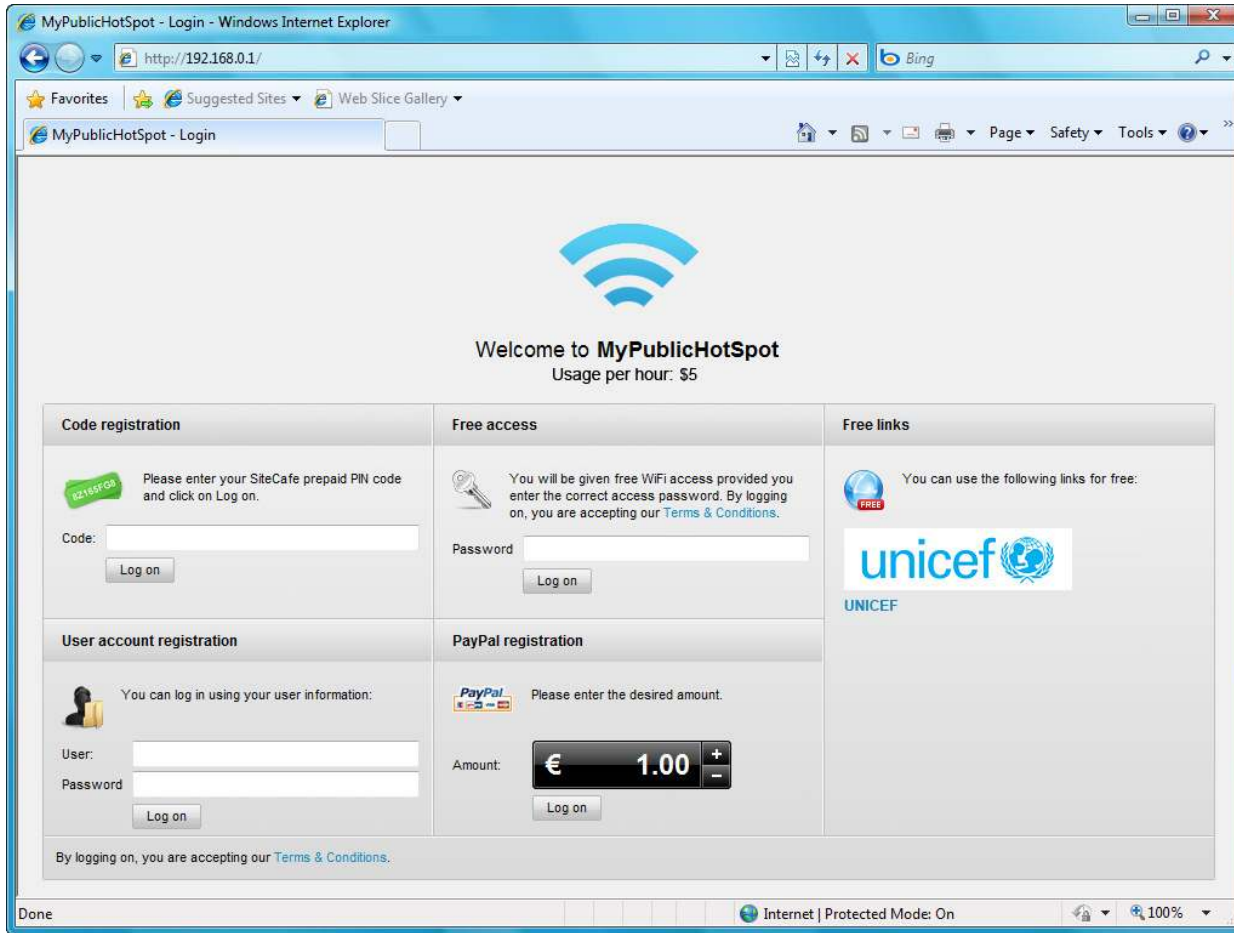


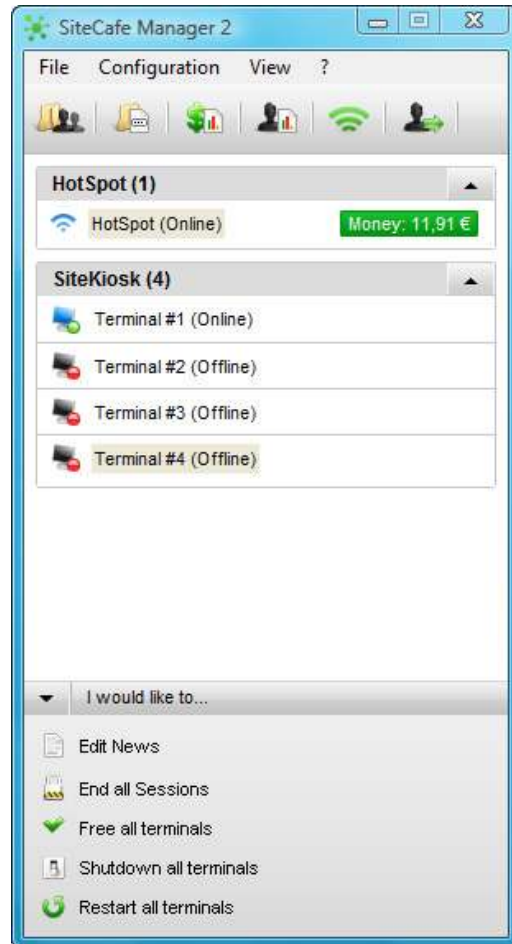
Free Links

Once the customer's computer is connected to the HotSpot network, the customizable Welcome page will automatically pop up when the web browser is launched.

**Note**

The welcome page will remain disabled as long as the HotSpot configuration on the SiteCafe server is open.





The Manager shows you information about the number of all currently active sessions at a glance:

The Manager also allows you to manage SiteKiosk kiosks PCs if you like.

**The benefits of this software at a glance:**

**- License once, and allow any number of customers to use HotSpot.**

You pay one license fee per installation location (e.g. hotel) no matter how many customers want to use your hot spot at the same time. Additionally, you will not be forced to share your revenue with others as is often the case with other existing hot spot solutions.

**- Minor hardware investments**

You can install MyPublicHotSpot on the same computer that also runs SiteCafe Server. The only two other things you will need to run your own HotSpot is a WIFI access point and a second network card.

**- Conveniently change settings**

You can use the Manager to adjust all important client settings, e.g. usage fees and news, from one central location.

## Try it before you buy it!

Minimize your risk of purchasing the wrong product and convince yourself of the capabilities of this software before you buy it.

**MyPublicHotSpot is the right choice for you!**

Support and updates will be free for at least the first 12 months after purchase!

## Pricing

For information on pricing, visit our online shop at <http://www.provisio.com>.

Log on to our online shop to download our price list as a PDF file.

**PROVISIO GmbH, Münster, Germany**  
<http://www.provisio.de>

**PROVISIO LLC, Chicago, USA**  
<http://www.provisio.com>

## MyPublicHotSpot (Full Package)

You can download MyPublicHotSpot as a standalone application. However, it is also available as a module as part of the SiteCafe installation version.

To purchase a MyPublicHotSpot license, visit our online shop or refer to a dealer of your choice.

### System requirements:

- Windows XP/Vista/Windows 7 (except the Starter Edition)
- Internet Explorer 6/7/8 (IE 8 recommended)
- 500 MHz processor
- 256 MB of RAM (at least 512 MB recommended)
- 100 MB of available hard disk space

### Using the HotSpot module requires additional hardware:

- WiFi access point
- Second network card (no USB adapter)

**File size:** approx. 25 MB

→ <http://www.provisio.com/MyPublicHotspot/hotspot-billing-software.aspx>

